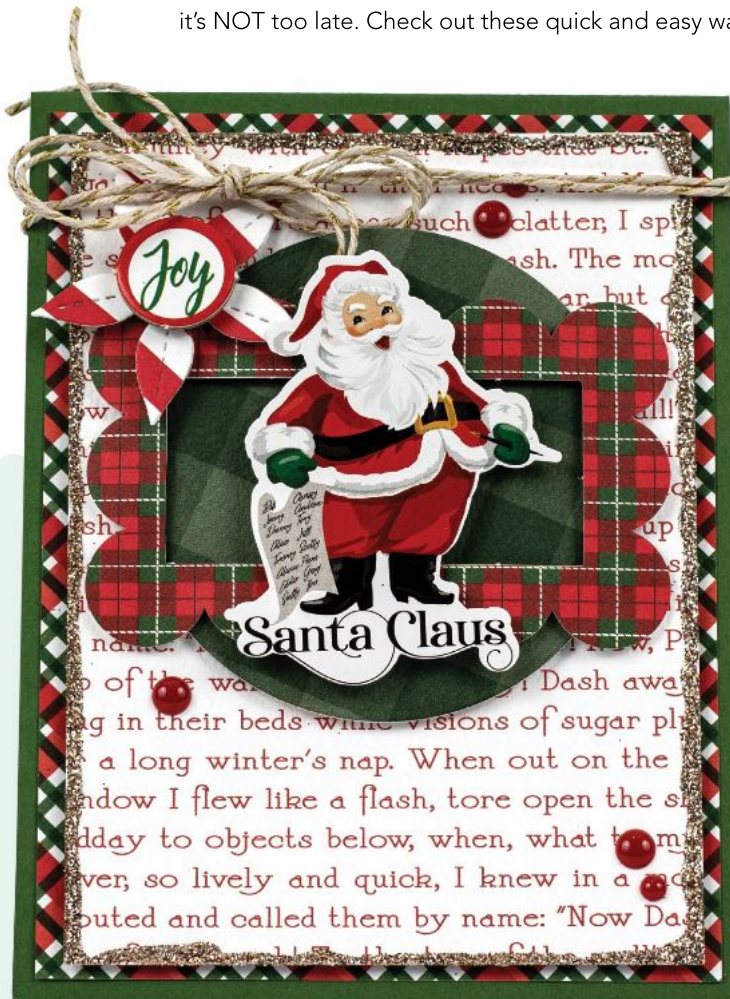


# creative cards

Where card makers come to share what's hot in the world of stamping, die cutting, and handmade kindness!

**Each year you say to yourself,** "I'm going to make alllll of my holiday cards ahead of time. I really am!" But time mysteriously slips away, doesn't it? If you can relate, we are here to say it's NOT too late. Check out these quick and easy ways to make it happen this year.



## santa claus

BY LATISHA YOAST

**supplies** CARDSTOCK, DIE, RIBBON: Lawn Fawn;  
PATTERNED PAPER, ENAMEL DOTS, EPHEMERA,  
STICKERS: Carta Bella Paper; GLITTER: Ranger Industries;  
ADHESIVES: Lawn Fawn, Scrapbook Adhesives by 3L

### OUR FOCUS:

#### LAST MINUTE HOLIDAY CARDS

The key to making quick holiday cards is to keep it simple and don't overthink it. We asked five talented designers to come up with their best ideas for speedy designs. Let's take a look at what they've come up with, and then carve out a little time for yourself and get to work!

### PAPER COLLECTION

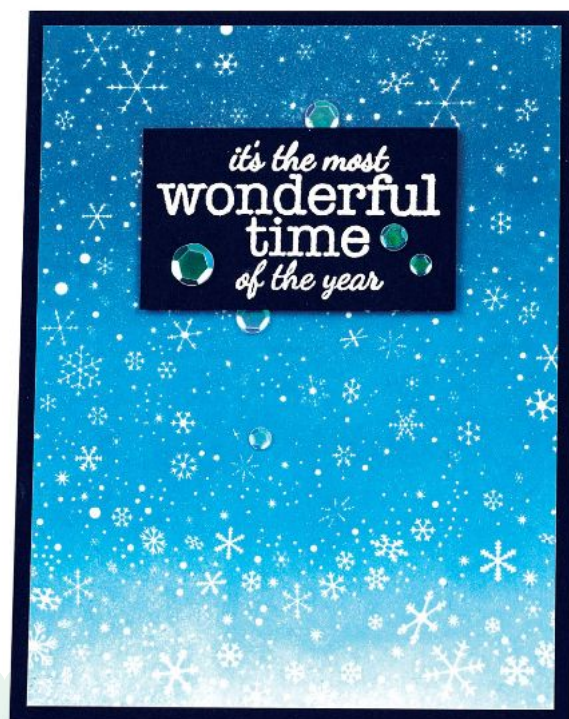
#### STEP-BY-STEP

- 1 Make card from cardstock. Trim patterned paper panel and adhere to card base.
- 2 Trim patterned paper panel, apply glue on edges, sprinkle on glitter, and let dry. Once dry, adhere to card front with foam tape.
- 3 Adhere ephemera frame, flower, joy, and Santa sticker to card with foam tape.
- 4 Adhere enamel dots and tie on twine bow.

#### DESIGN TIPS:

- **Make this design even simpler** by eliminating the glitter trim around the perimeter.
- **Pull out one collection** and go to town with the patterned papers, ephemera, and stickers.

## HEAT EMBOSSING



### STEP-BY-STEP

- 1 Make card from cardstock.
- 2 Trim cardstock panel; stamp and emboss snowflakes.
- 3 Blend three shades of blue ink over embossed panel.
- 4 Stamp and emboss sentiment on navy cardstock; adhere with foam tape.
- 5 Adhere sequins to panel; adhere panel to card base.

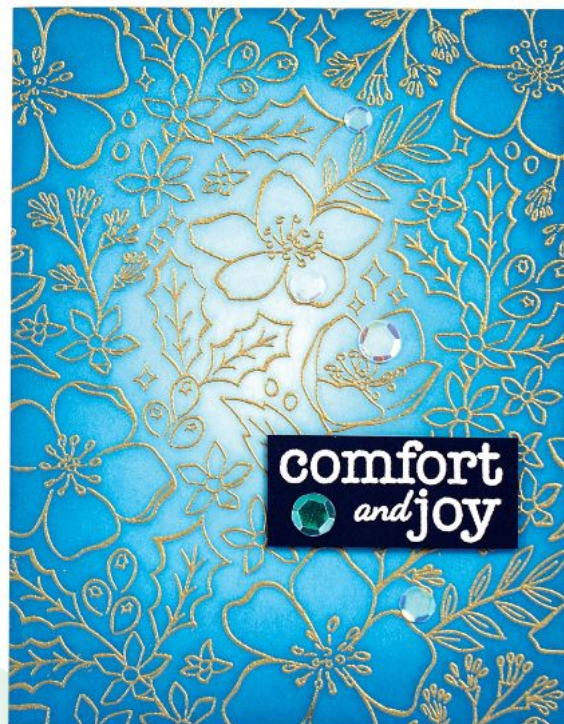
### DESIGN TIPS:

- **For extra sparkle**, spritz on shimmer spray—a mix of water and Perfect Pearls.
- **To make this design even simpler**, skip the sequins. It's gorgeous even without them!

**it's the most wonderful time of the year**

BY CALY PERSON

**supplies** CARDSTOCK, STAMPS, EMBOSSING POWDER: Hero Arts; INK: Pinkfresh Studio, Tsukineko; SEQUINS: Lucy's Cards; ADHESIVE: Therm O Web



### STEP-BY-STEP

- 1 Make card from cardstock.
- 2 Trim cardstock panel; stamp and emboss snowflakes.
- 3 Blend three shades of blue ink over embossed panel.
- 4 Stamp and emboss sentiment on navy cardstock; adhere with foam tape.
- 5 Adhere sequins to panel; adhere panel to card base.

### DESIGN TIPS:

- **Heat emboss a bunch** of sentiments all at once to make multiples quickly.
- **A limited colour palette keeps things simple** and gives you less to clean up when you are done.

**comfort and joy**

BY CALY PERSON

**supplies** CARDSTOCK, EMBOSSING POWDER, STAMPS: Hero Arts; INK: Pinkfresh Studio, Tsukineko; SEQUINS: Lucy's Cards; ADHESIVE: Therm O Web



## PATTERNED PAPER AND SIMPLE COLOURING



### STEP-BY-STEP

- 1 Make card from cardstock.
- 2 Adhere patterned paper panel to card base.
- 3 Die cut oval from patterned paper.
- 4 Die cut oval from white cardstock, die cut snowbank, and stamp snow angel image with grey ink. Adhere snowbank to patterned oval; adhere to card front.
- 5 Stamp images on cardstock with black ink, colour, die cut, and adhere using foam tape on some.
- 6 Stamp sentiment with black ink on grey cardstock, trim into strip, and adhere; affix sequins.

### DESIGN TIPS:

- **Don't overthink your colouring.** Keep it simple so you can whip out several cards.
- **Skip the techniques** and let the patterned paper do the work for you when creating backgrounds.

## season's greetings

BY JESSICA MCAFEE

**supplies** CARDSTOCK: Heffy Doodle, Spectrum Noir; PATTERNED PAPER: Lawn Fawn, Simple Stories; STAMPS: Lawn Fawn; INK: Tsukineko; MARKERS: Spectrum Noir; SEQUINS: Pretty Pink Posh; DIES: Heffy Doodle; ADHESIVE: Lawn Fawn, Scrapbook Adhesives by 3L



### STEP-BY-STEP

- 1 Make card from cardstock.
- 2 Die cut rectangle from patterned paper; die cut oval from center and adhere to card base.
- 3 Stamp *Merry* with black ink in oval; stamp *Christmas* on grey cardstock, trim into strip, and adhere.
- 4 Stamp image on white cardstock with black ink; die cut, colour, and adhere with foam tape.
- 5 Affix sequins.

### DESIGN TIPS:

- **Enlist some help!** If you've got crafty kids, have them do the colouring while you work the die cut machine and add the sequins.
- **Eliminate one step by stamping** one sentiment on the white oval instead of adding a secondary sentiment on a strip.

## merry christmas

BY JESSICA MCAFEE

**supplies** CARDSTOCK: Heffy Doodle, Spectrum Noir; PATTERNED PAPER: Lawn Fawn; STAMPS: Waffle Flower Crafts; INK: Tsukineko; MARKERS: Spectrum Noir; SEQUINS: Pretty Pink Posh; DIES: Heffy Doodle; ADHESIVE: Lawn Fawn, Scrapbook Adhesives by 3L

## SIMPLE DIE CUTTING



### STEP-BY-STEP

- 1 Make card from cardstock. Trim pale grey panel and adhere to card base.
- 2 Die cut *merry* from various shades of cardstock.
- 3 Trim cardstock panel, adhere *merry* pieces to panel, trim, and adhere to card front.
- 4 Stamp and emboss sentiment on black cardstock, die cut, and adhere.

### DESIGN TIPS:

- **Find a die that does the work for you in the least possible trips** through the die cut machine. This card's elements can be die cut in merely two times through the machine.
- **Use up scraps from other projects.** You're cleaning up your craft area AND making cards! Look at you go!

**merry**

BY LAURA BASSEN

**supplies** CARDSTOCK: Neenah, Simon Says Stamp, The Stamp Market; STAMP: CZ Design for Simon Says Stamp; INK: Tsukineko; EMBOSSING POWDER: Simon Says Stamp; ADHESIVE: 3M, Gina K. Designs



### STEP-BY-STEP

- 1 Make card from cardstock.
- 2 Trim light grey panel and trim smaller patterned paper panel; adhere to each other and to card front.
- 3 Die cut beard and hat trim from white cardstock, hat from red cardstock, glasses from black cardstock, and lenses from holographic cardstock; adhere pieces to card with foam tape.
- 4 Stamp, emboss, and die cut sentiment and adhere.

### DESIGN TIPS:

- **Use a big die** that takes up the bulk of an A2 card front.
- **Don't overthink placement.** Just center everything and call it done.

**ho ho ho**

BY LAURA BASSEN

**supplies** CARDSTOCK: Neenah, Simon Says Stamp; PATTERNED PAPER: Doodlebug Design; HOLOGRAPHIC CARDSTOCK, DIES, EMBOSSING POWDER: Simon Says Stamp; STAMP: CZ Design for Simon Says Stamp; INK: Tsukineko; ADHESIVE: 3M, Gina K. Designs

## LIMITED COLOUR PALETTE



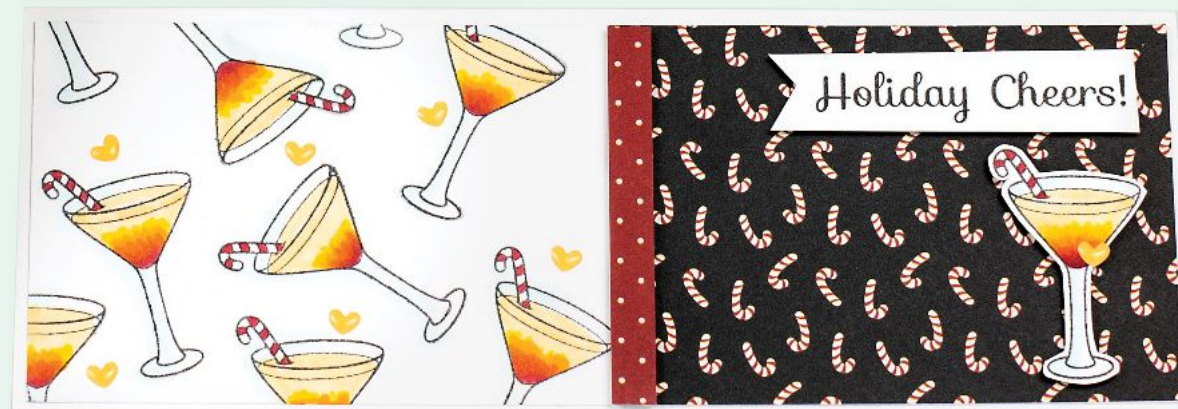
### STEP-BY-STEP

- 1 Make card from cardstock.
- 2 Trim patterned paper panel, and two strips of patterned paper; adhere one strip to panel, trim banner end on second strip and adhere to first strip.
- 3 Stamp image on white cardstock, colour, and fussy cut; adhere with foam tape.
- 4 Punch patterned paper circle and adhere behind image.
- 5 Stamp sentiment on white cardstock with black ink, trim into banner, and adhere with foam tape.
- 6 Affix enamel shapes; adhere panel to card base with foam tape.

## gliding by with holiday cheer

BY ANGIE BLOM

**supplies** CARDSTOCK: Hammerhill; PATTERNED PAPER, STAMPS: Your Next Stamp; INK: Gina K. Designs; MARKERS: Copic; ENAMEL SHAPES: Doodlebug Design; ADHESIVE: Therm O Web; OTHER: Punch



### STEP-BY-STEP

- 1 Make slimline card from cardstock.
- 2 Trim slimline panel from cardstock; trim patterned paper panel and strip and adhere to cardstock panel using foam tape on the strip.
- 3 Stamp one image repeatedly on the left side of the panel; colour stamped images.
- 4 Stamp, colour, and fussy cut one more cocktail glass; adhere with foam tape.
- 5 Stamp sentiment on white cardstock with black ink, trim into banner, and adhere with foam tape.
- 6 Affix enamel shapes; adhere panel to card base.

## holiday cheers

BY ANGIE BLOM

**supplies** CARDSTOCK: Hammerhill; PATTERNED PAPER, STAMPS: Your Next Stamp; INK: Gina K. Designs; MARKERS: Copic; ENAMEL SHAPES: Doodlebug Design; ADHESIVE: Therm O Web

### DESIGN TIPS:

- **Don't forget!** Slimline cards are 8½ x 3½, and since they fit in a business-sized envelope, they don't require extra postage.